

Packaging Development



PACKAGING DEVELOPMENT

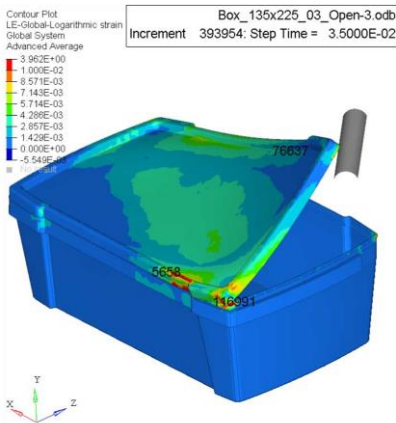


Figure 1: Strength/force analysis when opening lid

Challenge for the industry today

Markets and requirements are continuously updated with regards to topics such as: preferred packaging materials, increased transportation efficiency, reduced cost, minimized product waste, new sales channels and not to forget environmental and sustainable aspects.

Service and Approach

When working with AFRY you have access to a wide range of un-biased knowledge, disciplines and experiences. We are used to working within the packaging value chain from a helicopter perspective as well as in detail.

Typically starting by pinpointing your needs and delimitations. We then proceed to develop design and material suggestions, prototypes and perform needed testing before continuing to finalizing design and documentation. All the time in close communication with you.

In our portfolio we have tools such as:

Lectures and workshops, LCA, Material knowledge, FEA-analysis, Test-labs, CAD-design, Packaging & Pallet optimization

Expected Outcome

New and/or optimized packaging, based on Your needs and requirements. Ready to be implemented wherever You choose in the world.

Content of the Offering:

Challenges: Meeting the constantly changing and evolving requirements on packaging.

Approach: Identifying your needs and delimitations and from this develop your requested packaging.

Outcome: The, un-biased, packaging development You want and need.

With deliveries such as:

- Detailed 2D and 3D drawings and specifications.
- Material recommendations with optimized performance throughout the value chain.
- Sustainable consumer and transport packaging.
- Increased competitiveness.
- Optimized packaging functionality in the supply chain.



Niclas Björkholz
Section Manager
niclas.bjorkholz@afry.com
+46 105059674
Malmö