

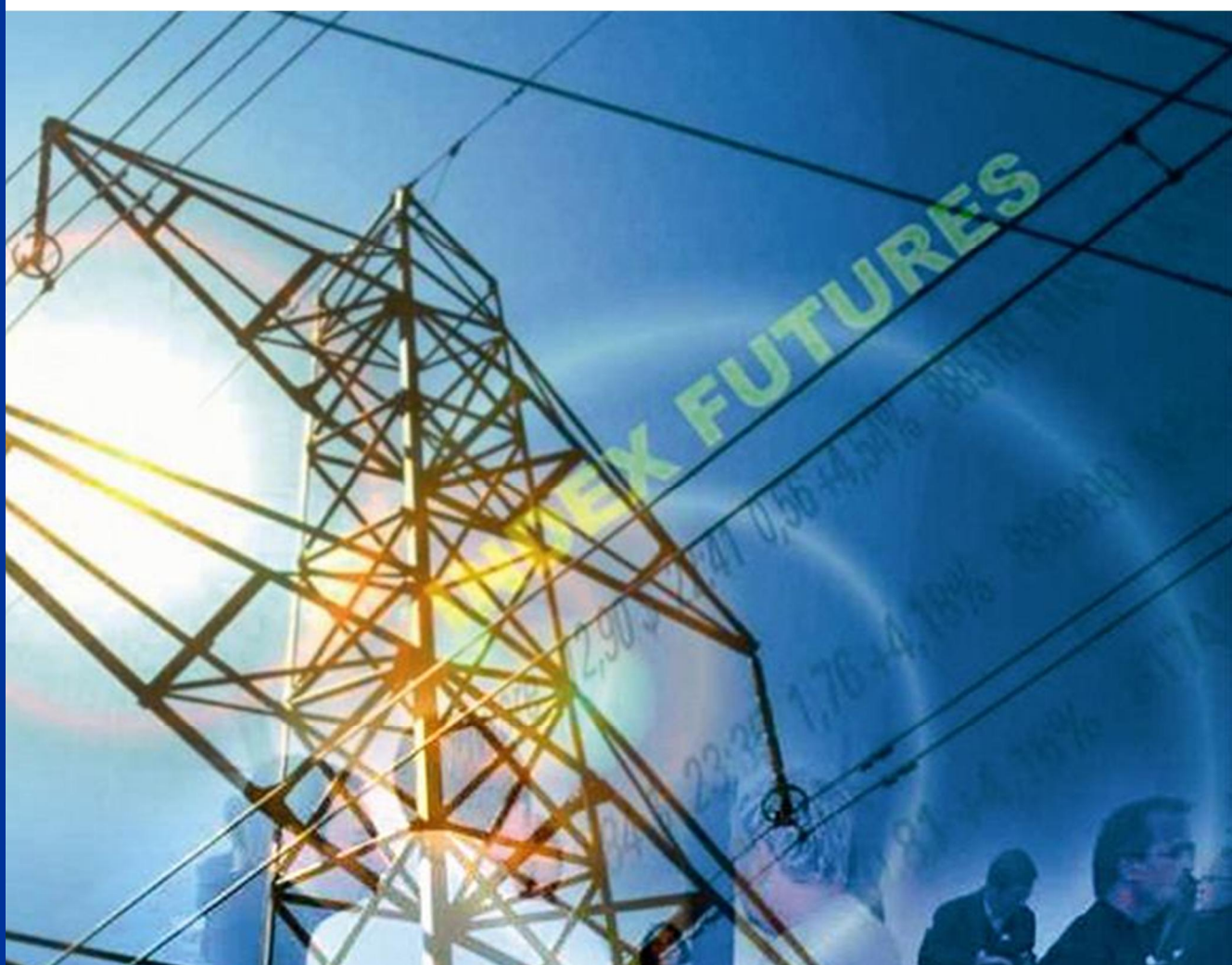


ASSESSMENT OF THE ALLOWANCE SUPPLY ADJUSTMENT MECHANISM

A report to Fortum

June 2013

ASSESSMENT OF THE ALLOWANCE SUPPLY ADJUSTMENT MECHANISM



Contact details

Name	Email	Telephone
Stephen Woodhouse	stephen.woodhouse@poyry.com	+44 1865 812222
Simon Henry	simon.henry@poyry.com	+44 1865 812240

Pöyry is an international consulting and engineering company. We serve clients globally across the energy and industrial sectors and locally in our core markets. We deliver strategic advisory and engineering services, underpinned by strong project implementation capability and expertise. Our focus sectors are power generation, transmission & distribution, forest industry, chemicals & biorefining, mining & metals, transportation, water and real estate sectors. Pöyry has an extensive local office network employing about 7,000 experts. Pöyry's net sales in 2012 were EUR 775 million and the company's shares are quoted on NASDAQ OMX Helsinki (Pöyry PLC: POY1V).

Pöyry Management Consulting provides leading-edge consulting and advisory services covering the whole value chain in energy, forest and other process industries. Our energy practice is the leading provider of strategic, commercial, regulatory and policy advice to Europe's energy markets. Our energy team of 200 specialists, located across 14 European offices in 12 countries, offers unparalleled expertise in the rapidly changing energy sector.

Copyright © 2013 Pöyry Management Consulting (UK) Ltd

All rights reserved

No part of this publication may be reproduced, stored in a retrieval system or transmitted in any form or by any means electronic, mechanical, photocopying, recording or otherwise without the prior written permission of Pöyry Management Consulting (UK) Ltd ("Pöyry").

This report is provided to the legal entity identified on the front cover for its internal use only. This report may not be provided, in whole or in part, to any other party without the prior written permission of an authorised representative of Pöyry. In such circumstances additional fees may be applicable and the other party may be required to enter into either a Release and Non-Reliance Agreement or a Reliance Agreement with Pöyry.

Important

This document contains confidential and commercially sensitive information. Should any requests for disclosure of information contained in this document be received (whether pursuant to; the Freedom of Information Act 2000, the Freedom of Information Act 2003 (Ireland), the Freedom of Information Act 2000 (Northern Ireland), or otherwise), we request that we be notified in writing of the details of such request and that we be consulted and our comments taken into account before any action is taken.

Disclaimer

While Pöyry considers that the information and opinions given in this work are sound, all parties must rely upon their own skill and judgement when making use of it. Pöyry does not make any representation or warranty, expressed or implied, as to the accuracy or completeness of the information contained in this report and assumes no responsibility for the accuracy or completeness of such information. Pöyry will not assume any liability to anyone for any loss or damage arising out of the provision of this report. The report contains projections that are based on assumptions that are subject to uncertainties and contingencies. Because of the subjective judgements and inherent uncertainties of projections, and because events frequently do not occur as expected, there can be no assurance that the projections contained herein will be realised and actual results may be different from projected results. Hence the projections supplied are not to be regarded as firm predictions of the future, but rather as illustrations of what might happen. Parties are advised to base their actions on an awareness of the range of such projections, and to note that the range necessarily broadens in the latter years of the projections.

EXECUTIVE SUMMARY

Overview

The allowance supply adjustment mechanism (ASAM) is among alternative solutions proposed for structural reform of the EU ETS. The option is designed to introduce flexibility into the market for allowances by enhancing the elasticity of allowance supply over the short term, while leaving the overall long term drivers in place. The mechanism aims to maintain an allowance surplus within an 'optimal' band of the following years' cap (proposed as 40-50%). In years where there is excess surplus outside the 'optimal' band, allowances are withheld from auction and placed in a reserve; and in years of shortfall (i.e. surplus below the 'optimal' band), reserved allowances are released (provided that the reserve is sufficient), thereby not altering the overall level of the long term cap. There are also proposed alterations to the mechanism for determining free allocations to industry.

We have conducted a critical review of the mechanism including a limited quantitative assessment. For the quantitative analysis we have developed a number scenarios specifically designed to test the elements of the mechanism itself and also how it responds to different economic and policy landscapes. The analysis has been performed using Pöyry's Carbon Model. The critical review has taken into account the requirements of a reformed EU ETS and we have conducted this with three overarching themes in mind: efficiency, credibility and practicality.

Evaluation

The results from our assessment indicate that the proposal does have some strengths. These include:

- It is a non-discretionary, rules based mechanism for supply intervention. In some cases, the supply side flexibility it introduces can help ameliorate price rises as well as smoothing out the effect of surpluses of allowances.
- The mechanism would also make use of existing institutions and on first inspection should not be complex or expensive to implement.

Limitations

However, several limitations were also identified; notably the concept of an optimal surplus band and the timing of supply intervention. Our modelling suggests the 'optimal' surplus¹ would, without the ASAM amendment, be chosen by the market based on the shape of the supply and demand curves over the following years. Left to its own devices, the market would manage the degree of surplus in order to minimise abatement costs in the coming years, adjusting for costs (and risks) of holding allowances against future needs (termed the 'cost of carry'). Consequently, a mechanism which tries to override this natural market balance and deliver a pre-determined surplus level does not necessarily make efficient interventions, and this can lead to volatile prices. This effect is compounded by the time lag before any supply intervention takes place. Any decision to withhold or increase supply is based on data from the emissions verification process, which is only known once a year. Consequently, there will always be a delay between the time when the change in the surplus actually takes place and the time of the supply intervention.

¹ There is an inherent need for a surplus of allowances at any time, to allow producers to hedge against their future production commitments.

In reality, if a mechanism such as the ASAM were implemented, it is likely that market participants would modify their behaviour to anticipate the effects of the mechanism. Changes to market behaviour, which counter the effects of the measure, may help to reduce the levels volatility that are seen in our modelled results². However, they may also have some unpredictable, second order impacts.

In order to improve the mechanism, the surplus band level may have to be reviewed and reset regularly. This requirement may be compounded by expected changes to the structure of the market in the future, notably the continued transition to auctioning of allowances. Whilst there is provision in the proposal for this review process to take place, it is likely that this requirement for review could undermine the credibility of the scheme in the long run. As a result, the ETS under the ASAM could still be subject to political intervention, and therefore could fail to provide the level of certainty that is required by potential investors in capital intensive, low carbon technology.

Potential enhancements

Several suggestions are made, both to the mechanism itself and to the accompanying policies, as to how the ASAM's implementation could be improved.

In terms of the mechanism, one option would be to start with a low surplus band to quickly restore price tension to the market and load the reserve with allowances, and then to shift to a higher surplus band in later years to allow sufficient allowances to be released from the reserve to ameliorate price rises as much as possible. An alternative strategy could be to change the basis of the optimal surplus band to be the function of a pre-defined calculation that takes into account a number of variables, such as economic growth and the impact of other energy policies. This would allow the band level to respond to a number of factors over time to try to ensure it is at the right level and therefore make the correct supply intervention. To succeed, the objectives of the future reviews would somehow need to be predefined and the degree for short term political intervention should be contained.

In terms of the accompanying policies, our modelling suggests that backloading and the ASAM do not work well together. This is due to the timing of the supply interventions, which are not aligned between these two mechanisms. In contrast to this, we have found no major additional challenges associated with combining the ASAM with tighter CO₂ targets or higher RES subsidies. With the tighter CO₂ targets scenario, the ASAM may work best with a lower surplus band in the early years to quickly restore price tension, and a higher band in the later years so that allowances from the reserve are released in sufficient quantities to help ameliorate price rises.

Uncertainties

We note that the scheme also proposes to alter the basis for free allocations. This aspect of the scheme has not been fully explored, and we register the concerns that these issues have proved to be highly contentious in the past and so this could potentially bring opposition to the scheme; and also that the incentives on industry under the proposed

² We note that we model the market on an annual basis therefore do not capture the ability to borrow some allowances from the future year. This is largely a function of the timing of the submission of allowances during the compliance process (in April for the previous year) which allows participants to use some allowances from the current year to cover their emissions from the previous year.

allocation scheme would be rather different to the existing allocation methodology. This area merits further attention.

Conclusion

Finally, we observe that the existing balance between short term and long term is distorted because of the widespread concern that the EU ETS in its current form is failing, and that some alternative to the EU ETS may be found. The consequent risk that future allowances will not have a value is inflating the 'cost of carry' and limiting the extent to which a future shortage of allowances influences today's prices. As a consequence, the introduction of **any** credible mechanism which promises to deliver a long-term solution within the existing EU ETS framework may restore the necessary balance between current and future prices. Therefore, if it were adopted with widespread approval, then the ASAM scheme could succeed despite its limitations.

Pöyry is a global consulting and engineering firm.

Our in-depth expertise extends across the fields of energy, industry, transportation, water, environment and real estate.

Pöyry plc has c.7000 experts operating in 50 countries and net sales of EUR 775 million (2012). The company's shares are quoted on NASDAQ OMX Helsinki (Pöyry PLC: POY1V).

Pöyry Management Consulting provides leading-edge consulting and advisory services covering the whole value chain in energy, forest and other process industries. Our energy practice is the leading provider of strategic, commercial, regulatory and policy advice to Europe's energy markets. Our energy team of 200 specialists, located across 14 European offices in 12 countries, offers unparalleled expertise in the rapidly changing energy sector.



Pöyry Management Consulting

King Charles House
Park End Street
Oxford, OX1 1JD
UK

Tel: +44 (0)1865 722660
Fax: +44 (0)1865 722988
www.poyry.co.uk

E-mail: consulting.energy.uk@poyry.com



Pöyry Management Consulting (UK) Ltd, Registered in England No. 2573801
King Charles House, Park End Street, Oxford OX1 1JD, UK