



# GED 2.0.7

License order and Installation instructions

p4627

10 October 2024

# Contents

Contents .....	2
1 New contact information .....	3
2 GED Version 2.0.7 license system .....	3
3 GED installation .....	4
4 License ordering to AFRY .....	6
5 DEMO license .....	8
6 Installation of license file .....	8

## 1 New contact information

GED is supported by the Hydrogeology and Waste disposal group part of the Nuclear Energy department in AFRY Switzerland.

The Nuclear Energy department moved to the new offices of AFRY Switzerland in Zürich Alstetten. The new contact information for GED is:

AFRY Switzerland Ltd  
Hydrogeology and Waste Disposal  
Nuclear Energy Department  
Herostrasse 12  
CH-8048 Zürich

GED project leader:

Dr. Axayacatl Maqueda  
Phone: +41 76 356 26 53  
Email: [ge.dev@afry.com](mailto:ge.dev@afry.com)

## 2 GED Version 2.0.7 license system

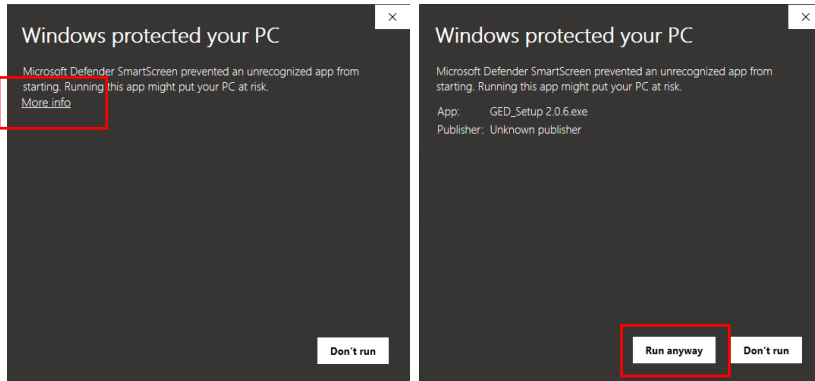
We decided to develop a more robust system where the license is a file installed locally at computers of the user.

The past implementation of the license server required an internet connection from the computer where GED is installed to a license server managed by AFRY.

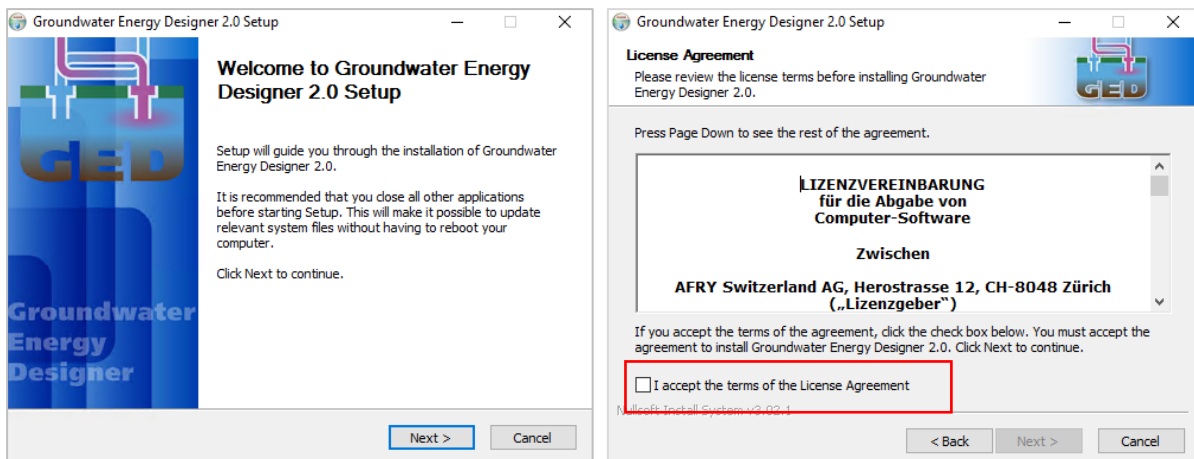
The new system is more robust and does not require an internet connection.

### 3 GED installation

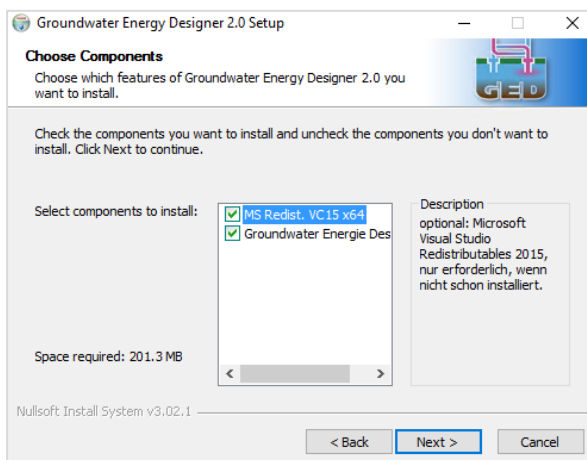
Please uninstall previous versions of GED in your computer. Run the installer file with Windows Administrator rights. If Windows Defender protection is set to high levels the window below may appear. Click on the option More info and then the button Run Anyway.



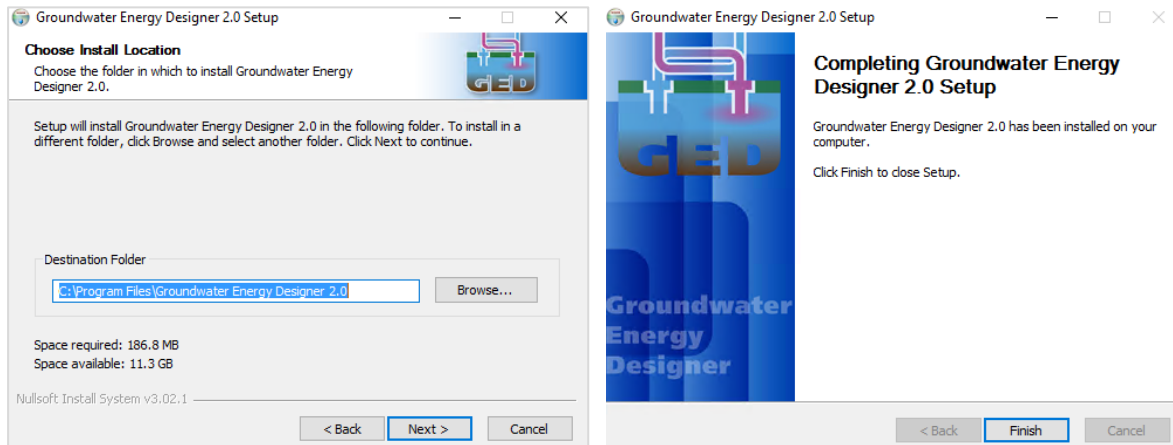
The installation starts, check the box to accept the license agreement.



The GED installer will require the installation of Microsoft libraries if they are not already present in the operating system. If they are already installed, the MS libraries are optional.



We recommend installing GED in the default directory in Windows program files. Other locations can be selected too if desired and finish the install process.



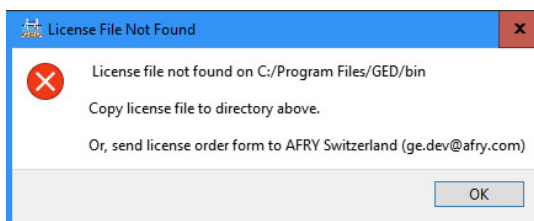
## 4 License ordering to AFRY

If no license file has been sent by AFRY, follow these steps.

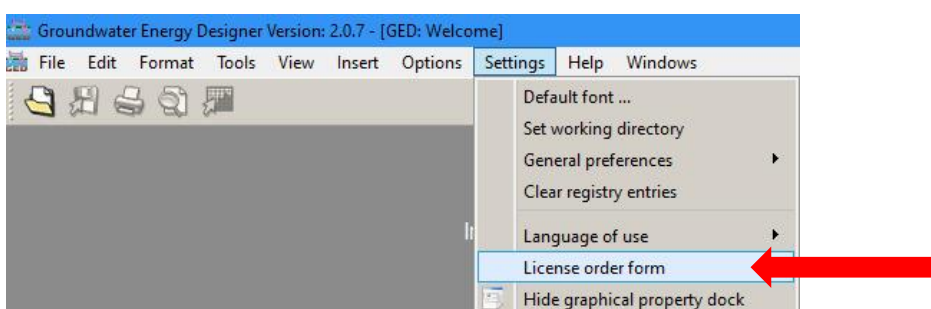
1. Run GED 2.0.7 for first time



2. An error message stating the license file was not found on the GED install directory appears. Click OK to continue.



3. The GED main window opens, and the only possible action is to order a license. To order a license click on the Menu bar > Settings > License Order Form as shown below.





4. A window with the license form appears. It is possible to fill out the form in two manners:
  - Type your contact information directly on the form and then select **Export PDF** option, and send us the PDF file to [ge.dev@afry.com](mailto:ge.dev@afry.com)
  - Or print the form fill it by hand, scan it and send it to [ge.dev@afry.com](mailto:ge.dev@afry.com)

The screenshot shows a web browser window titled "Groundwater Energy Designer Version: 2.0.7 - [Editor 0 - Orderform\_en.htm\*]". The browser's address bar shows the URL "http://www.afry.com/afry-groundwater-energy-designer/orderform\_en.htm". The page content includes the AFRY logo (a stylized globe) and the text "AFRY АТ ПОУНЬ". Below the logo, the email address "ge.dev@afry.com" is displayed, followed by the instruction "Please send this form by email.".

The main heading of the form is "Order: Groundwater Energy Designer 2 (v2.0.7)". Below this heading is a form with the following fields:

Title:	
Name:	First name:
Organization:	VAT / MwSt / TVA number:
Address:	
Postal code:	City:
Country:	Email:
Telephone:	

Below the contact information form is a section titled "ComputerID" with a single input field containing a red asterisk string: "Computer ID: \*\*\*\*\*".

Next is a table listing license products:

Product	Unit price	Items
Lifetime license for <b>Groundwater Energy Designer 2 (BASIC)</b> linked to a <i>specific computer hardware</i> .	660 €	
Lifetime license for <b>Groundwater Energy Designer 2 (PLUS)</b> linked to a <i>specific computer hardware</i> . License includes documentation, and 3 hours of support for software installation and principles for calculations.	1'430 €	
Upgrade of an existing GED BASIC license to the PLUS Version	770 €	
Transfer of an existing license to a new computer hardware (new computerID)	300 €	

Below the table, the text reads: "This order is binding. By ordering the product listed above, I accept the terms and conditions contained in the corresponding License Agreement."

At the bottom of the form, there are two fields: "Place, Date:" and "Signature:". Below these fields is the contact information for AFRY Switzerland Ltd: "AFRY Switzerland Ltd, Hydrogeology and Waste Disposal, Nuclear Energy Department, Herostrasse 12, CH-8048 Zurich, T +41 76 356 26 53 | www.afry.ch".

5. Once we receive your order, we will reply by email with the license file.

## 5 DEMO license

If a demo license is needed to test GED, please write us to [ge.dev@afry.com](mailto:ge.dev@afry.com) indicating the date of start of the DEMO period and the computerID value indicated in the order form.

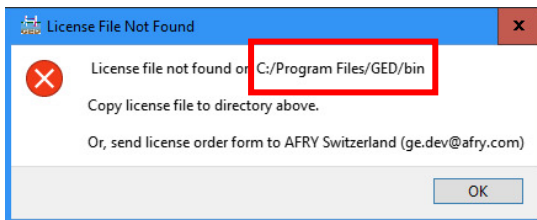
We will reply by email with a license valid for 14 days.

## 6 Installation of license file

Just copy license file received by email to the directory indicated in the error message displayed when opening GED.

The example below is for the suggested installation directory. Therefore, just copy license\_GED.zip to C:/Program Files/Groundwater Energy Designer 2.0/bin

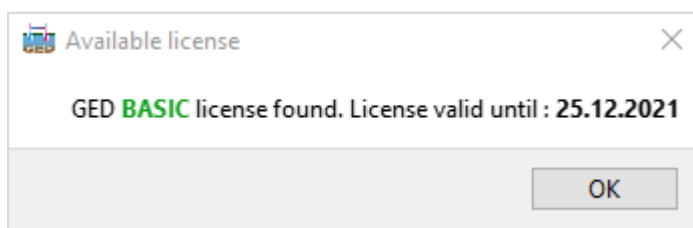
Usually Windows Administrator rights are needed to copy files to this directory.



An alternative to find the path were to copy the license file is to make a right-click with the mouse on the shortcut created on the Desktop for GED. Copy the license file to that directory path.

After the license file has been copied, run GED once again. The following information message should appear if the license file is valid. BASIC or PLUS depending on the GED version ordered and the end date of the end of the license:

- 31.12.2099 for lifetime license.
- A 14-day period for DEMO licenses.



GED is ready to work, no internet connection is needed. Any past project can be opened now.